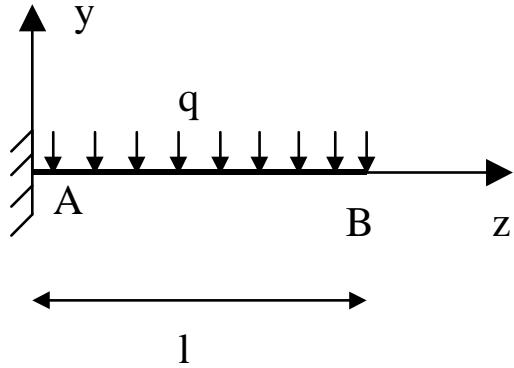
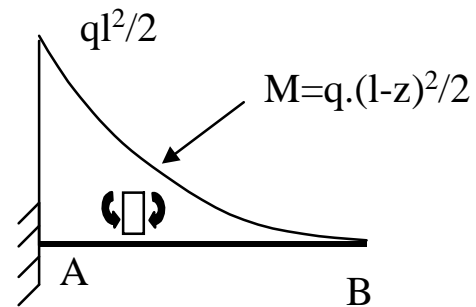


EJEMPLO:



¿Flecha y giro en B?

Ley de momentos flectores:



$$\theta_B = \int_A^B \frac{M}{EI} dz = \int_0^l \frac{q(l-z)^2}{2EI} dz = \frac{ql^3}{6EI}$$

$$\downarrow v_B = \int_A^B \frac{M \cdot (L-z)}{2EI} dz = \int_A^B \frac{q \cdot (L-z)^3}{2EI} dz = \frac{q \cdot L^4}{8EI}$$